

# AP&T<sup>®</sup>

Shanghai Anping Static Technology Co.,Ltd

## AC High Voltage Power Supply



—AP&T—

## Product features

- ① Built-in energy storage components to ensure stable output power.
- ② High voltage and low current operation.
- ③ Easy to operate and install.
- ④ Thermally conductive silica gel potting, safe and reliable.

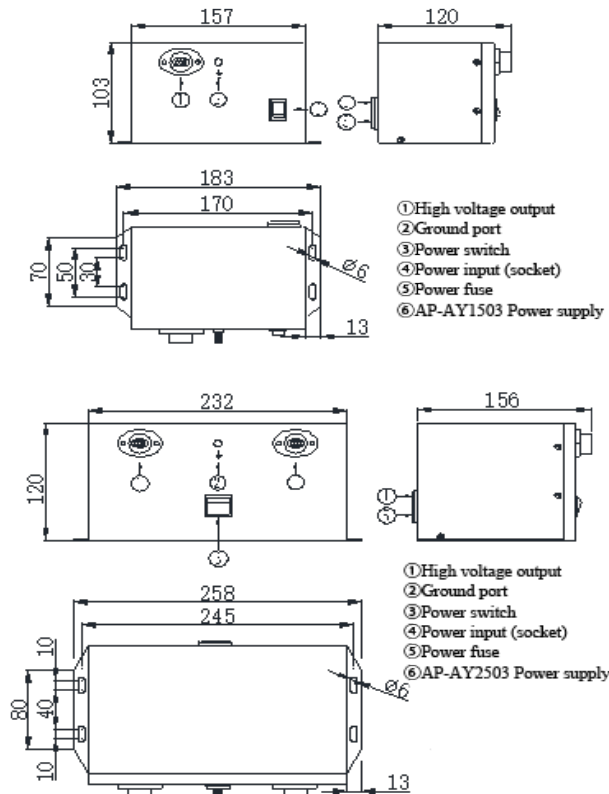
## Specification

| Model               | AP-AY1503                  | AP-AY2503                    |
|---------------------|----------------------------|------------------------------|
| Input voltage       | AC220V/50Hz or AC110V/60Hz |                              |
| Output voltage      | AC3500V                    |                              |
| Power               | 20W                        |                              |
| Working temperature | 0°C—45°C                   |                              |
| Working humidity    | <70%RH                     |                              |
| Net weight          | 2850g (AP-AY1503)          | 5300g (AP-AY2503)            |
| Gross weight        | 3350g (AP-AY1503)          | 5800g (AP-AY2503)            |
| Dimensions: L*W*H   | 157*120*103mm (AP-AY1503)  | 232 *156 * 120mm (AP-AY2503) |

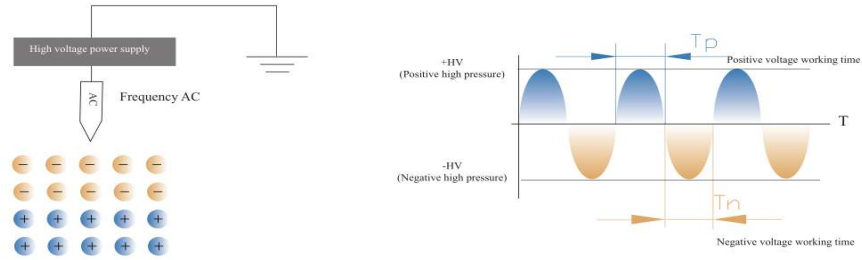
## Installation

- ① Insert the national standard power cord plug into the mains socket.
- ② Insert the high-voltage connector of the static elimination device into the high-voltage output socket of the power supply and connect its grounding terminal to the grounding stud of the high-voltage power supply.
- ③ Turn on the power switch. The switch indicator lights up to show that the power supply is working.

## Dimensions



## Working way(AC)



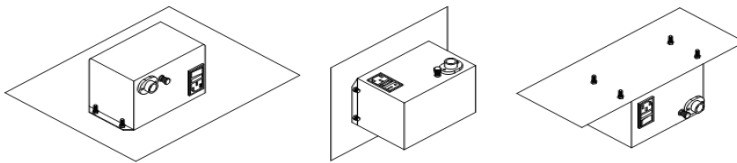
## Power maintenance

Stop using when the red switch working indicator light is off and ask for inspection and repairation by professionals. It can be used after the electrical performance are back to normal.

## Warning

- ① The working input power of the power box must be reliably connected to the ground wire of the power supply line.
- ② Do not use this equipment in a humidity environment > 85%.
- ③ It is strictly forbidden to use this equipment in a flammable and explosive environment.
- ④ Internal maintenance and repair must be performed by professionals.

## Installation method



## After-sales service

- ① The high-voltage power supply has undergone rigorous testing and aging treatment before leaving the factory and its performance fully meets the relevant indicators marked in the instructions for use.
- ② Manufacturer will repair or replace any defective parts that have been inspected by for free within one year from the date of purchase. However, this commitment does not apply to the following situations:
  - The equipment is misused and installed;
  - Damage caused by negligence and accident during use;
  - It has been altered, disassembled or repaired by other service departments not authorized by Anping Company.
- ③ AP&T does not assume any obligations and related responsibilities of product users except for the repair or replacement of parts within this regulation.

## Packaging accessories

- ① Warranty card
- ② Manual
- ③ Certificate of conformity
- ④ National standard power cord