

AP&T®

AP&T®

Air Source AC Pulse Ion Bar

Shanghai Anping Static Technology Co.,Ltd

AP-AB1216

3/F, Building 27, No.69, Guiqing Road, Shanghai, China

Tel: 021-64517676

Fax: 021-64517673

www.ap-static.cn

User Manual

Shanghai Anping Static Technology Co.,Ltd

1、General *****

AP-AB1216 Air source AC pulse ion bar is the newest developed bar type static eliminator for static removing.

It can be widely used in electronics, plastics, chemicals, printing, textile, optical and other industries.

2、Features *****

- (1) Bar shaped and cross over static eliminator
- (2) Manufactured by using the latest patented technology of static removing.
- (3) Fast speed of static removing, low ion balance and high safety.
- (4) LCD on bar body indicates working status for easy use and maintenance
- (5) Output voltage adjustable, fit for different static environment.
- (6) With alarm function of ion volume, electrode tip cleaning and high voltage fault.

3、Parameter *****

Model	AP-AB1216
Output voltage	DC±5.00 (KV)
Output frequency	30Hz (default)
Duty factor	10%-90%
Power	10W
Working distance	100-1000mm
Ion balance	$\leq \pm 30V $
Discharge time	$\leq 2S$ (adjust)
Working temperature	0°C-50°C
Working humidity	<70%
Air pressure scope	0.1-0.6MPa
Cord length	2.5m
Bar length	385mm, 410mm, 460mm, 510mm.....2510mm (spacing distance 50mm)

4. Notice on use and safety warning *****

- (1) Read this manual carefully before installing and using of the device.
- (2) Be sure the device reliable ground connected during use, otherwise may cause bar body burn.
- (3) Touching of electrode tip during use strictly prohibited.
- (4) Do not use this device in the environment where the humidity is greater than 75%.
- (5) Input air must be clean and filled air without water, oil and dust particle
- (6) It is strictly prohibited to use this equipment in combustible and explosive environment.
- (7) Internal maintenance and repair must be carried out by professionals

5. Installation guide *****

- (1) Installation
 - a. Choose optimal location for discharge and fix the bar and power supply steadily.
 - b. Connect earth to earth connect end on ion bar.
 - c. Insert one end of the power cord into power adapter and the other end into power port.
 - d. Connect air connector to air supply device with tube and turn on the air switch.
 - e. Turn on the power switch and adjust proper air pressure.

(2) Outline dimensional drawing

2	Static removing performance decline obviously	Pollute or damage of discharge pin	Clean or replace discharge pin
		Electrode pad not tightly screwed	Be sure the electrode pad screwed tightly
		Improper installation position	Confirm the optimum installation position
3	Static removing performance decline	There are conductor or other ion bar around	Remove conductor or other ion bar
4	HV Alarm	Electromagnetic disturb	Switch off and reset
		Abnormal discharge	Check installation position and be away from conductors
		Pollute or damage of discharge pin	Send back to manufacturer
5	Smoking or burning	Pollute or damage of discharge pin or electrode pad insulator	Send back to manufacturer

6. Maintenance *****

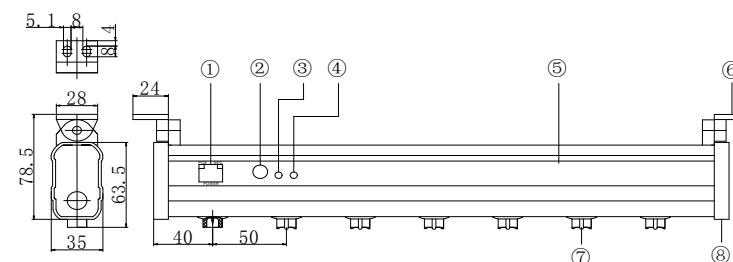
- (1) User should clean and maintain timely to ensure the good performance of the product according to working environment and requirement of ESD protection. Clean the carbon materials on electrode tip, discharge pad and metal discharge body with static brush or clean cloth with ethanol can obviously improve the performance.

Caution:

- A、 Must be done after the power is shut done for 10 minutes
 - B、 Restart must wait till alcohol completely volatilized after cleaning by clean cloth with ethanol. Any other organic solution is not allowed to be used to clean the rod.
- (2) Stop using when POS/NEG working indication keeps off. Re-use after check and repair by professionals.

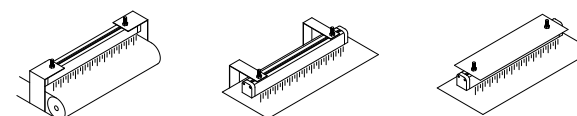
7. Accessories *****

1. Installation bracket 2. Power adapter 3. Power cord 4. Three-core power cord



- ① Power outlet ③ Power alarm ④ HV alarm ⑤ Bar body ⑥ Installation base
⑦ Discharge electrode socket ⑧ End cover

(3) Positioning



- a. **Caution**
- b. **Ion bar should be installed within the working area of static removing and installation angle should be perpendicular to the surface of the charged body**
- c. **The discharge electrode of ion bar should stay away from metal conductor, metal grounding, rods must be reliable ground connected.**
- d. **Trouble shooting**

N O	Error	Possible reason	Solution
1	Power port indication LED off	Poor contact of power cord	Check status and stable connection of power cord
		Power supply mismatch	Check power supply specification (INPUT: 100—240VAC 50/60Hz; OUTPUT: 24VDC 1000mA)